

Red Sunset Maple

The Red Sunset Maple is considered one of the best for early fall color! This tree has glossy green leaves and is extremely showy.

Height: 40-60'

Spread: 30-40'

Shape: *Pyramidal when young becoming rounded with age*

Sun: *Full*

Fall Color:
Orange-Scarlet

Growth Rate:
Moderate



Autumn Blaze Red Maple

Autumn Blaze maple is a new hybrid that is very popular. It is a cross between red and silver maples. It is fast growing, but does suffer some from iron chlorosis like the pure Silver Maple.

Height: 40-50'

Spread: 30-40'

Shape:
Upright branching, broadly oval

Sun: *Full*

Growth Rate: *Very Fast*

Fall Color:
Brilliant scarlet-red, long lasting



Crimson King Maple

A rich purple red foliage on a hardwood branched Maple. Produces dense shade. Noted for its striking color and hardiness.

Height: 40-50"

Spread: 25-20"

Shape: Oval

Sun: Full

Growth Rate: Slow

Fall Color: rich purple



Autumn Fantasy Maple

The fall color is an exceptionally beautiful ruby red that persists until the first hard frost. Very drought tolerant.

Height: 45--50'

Spread: 35-40'

Shape: Resembles pin oak but branches are short, more stout and dense

Sun: Full

Growth Rate: Very Fast

Fall Color: Ruby Red



**Emerald
Queen
Maple**

*Easily grown
in average,
medium
moisture,
well-drained
soil in full
sun to part
shade.
Tolerant of a
wide range
of soils.
Tolerant of
drought.
Shallow root
system*

Height: 40--
50'

Spread: 35-
45'

Shape:
Round

Sun: Full

**Growth
Rate:** Fast

Fall Color:
Yellow



**Pacific
Sunset
Maple**

*Glossy dark
green
foliage, fine
fall color
and
improved
adaptability
to heat and
drought.*

Height: 30'

Spread: 25'

Shape:
Round

Sun: Full to
part shade

**Growth
Rate:** Fairly
Fast

Fall Color:
Orange to
Red



Black Sugar Maple

Grows on a variety of soils, but most commonly on moist soils of river bottoms in mixed hardwood forests. It grows rapidly in early life, then slowly and may live 200 years.

Height: 75'

Spread: 30-40''

Shape:
*Broad-
rounded
symmetrical*

Sun: *Full to
part shade*

**Growth
Rate:** *Early
fast and then
slows*

Fall Color:
Golden



**Fall
Fiesta
Sugar**

NortAn excellent new hardwood shade tree. Glossy, green leaves are leathery & resist leaf tatter in late summer. Strong grower. Outstanding yellow- orange-red fall color..

Height: 50-75'

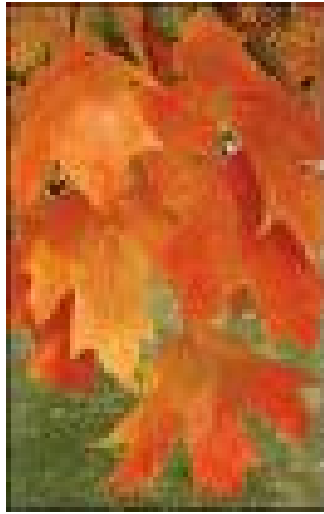
Spread: 50'

Shape: Oval

Sun: Full

Growth Rate:
medium

Fall Color:
Yellow-
orange/red



**Prairiefire
Crabtree**

Beautiful specimen. In May, crimson buds open to dark purplish-red 1½" wide flowers that do not fade. Emerging sharp-toothed leaves, a deep red-purple when young, mature to a dark tawny green.

Height: 20'

Spread: 20'

Shape: Low, dense, broadly rounded tree

Sun:

Growth Rate: 12-15'/year

Fall Color: Orange



**Harvest
Gold
Flowering
Crab**

*Beautiful specimen.
Red to pink in bud
and then opening to
white*

Height: 20'

Spread: 16'

Shape: Upright

Sun: Full

*Growth Rate:
Medium*

*Fall Color: Gold to
amber*



**Donald
Wyman
Flowering
Crab**

*This tree tends to
maintain a rounded
growth habit, and
most often grows a
bit wider than it
does tall, with a
mature height of 18-
22' and similar
mature width. This
tree flowers in early
spring, and as
pictured, buds begin
as an almost
crimson red, and as
they open fade to
pure white.*

Height: 18-22'

Spread: 18-22'

*Shape: Low, dense,
broadly rounded
tree*

Sun: Full

*Growth Rate:
Average*

*Fall Color: Amber-
yellow*



**Spring
Snow
Flowering
Crab**

Plants are used for specimens, patios, and along streets to create a warm glow of color each spring. They are attractive during the summer, bearing glossy green foliage

Spring Snow Crabapple has a very dense upright oval crown. It is one of the most showy white flowered crabapples with very abundant flowers that are slightly larger than most crabs. It does not produce fruit which is a valuable trait for planting in patios or over sidewalks



Height: 15-20'

Spread: 15'

Shape: Oval

Sun: Full

*Growth Rate:
Medium*

*Fall Color: Amber-
yellow*

Carefree Beauty

This rose needs little care and it blooms all the time.

Height/Width:

3-4'

Spacing:

3-4'

Resistance to disease:

Very

Growth:

Vigorous, upright, spreading



Color: *Light Rose*

Knockout

*This rose needs as little as 4 hours of sun a day. Needs **NO** deadheading!*

Height/Width:

3-4'

Spacing:

Resistance to disease:

Growth:

Color: *Cherry Red*



Nearlywild

Beautiful and tough! A bushy, hardy, and highly attractive shrub that booms recurrently through the season. Excellent for mass plantings.

Height/Width:

2 - 3 feet/bushy

Spacing:

Use as a hedge

Resistance to disease:

Extremely tolerant of Black-Spot and Powdery Mildew when grown in full sun and given good air circulation

Growth:



Color: *Rich Pink*

Grootendorst

These plants make excellent landscape plants and are also suitable for hedges. They do not like to be sprayed (doing so will turn the leaves yellow) but disease is not that much of a problem..

Height/Width:

4-6' / 3-4'

Spacing:

Use as a hedge

Resistance to disease:

They do not like to be sprayed (doing so will turn the leaves yellow) but disease is not that much of a problem..

Growth:



Color: *Pink*

Blue Spruce

Blue Spruce is one of the most popular garden conifers, grown for its strongly glaucous foliage. Numerous cultivars selected for particularly bright blue foliage. It is also sometimes used as a X-mas tree, though the very sharp needles make it a poor choice for families with children.

Height: 25-30 m

Spread: 30-40m

Shape: Cylindric

Sun: Full

Growth Rate: Slow

Fall Color: Bright Blue



White Pine

Swamp White Oak will tolerate light shade and can be planted near a building. Also tolerates wet and drought conditions and is sensitive to iron chlorosis.

Height: 100 - 160 ft

Spread: 20-30'

Shape: Cylindric

Sun: Full

*Growth Rate:
Fairly Fast*

Fall Color: Green



Green- spire Linden

Greenspire Linden is the standard of comparison among the Lindens. It has a strong central leader, very uniform branch arrangement and a symmetrical, pyramidal form.



Height: 40'

Spread: 30'

*Shape: Pyramidal,
symmetrical*

Sun: Full

*Growth Rate:
Fairly Fast*

*Fall Color:
Yellowish*