



Benton Community Certified Enrollment for 2011-12

By
Gary Zittergruen, Superintendent

Here is a snapshot of our enrollment at Benton Community for the 2011-12 school year and comparable data to our enrollment last year based on the certified count. Our headcount enrollment is 1476 students and our budget enrollment FTE is 1539.7. Included below is a table to highlight our enrollment at Benton this year compared to last school year:

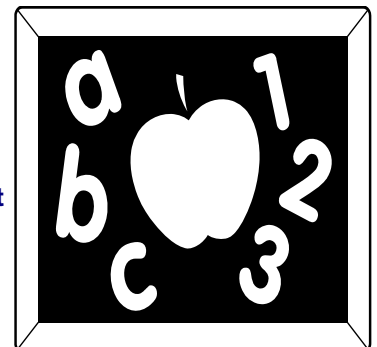
	<u>2011-12</u>	<u>2010-11</u>	<u>Difference</u>
Van Horne Center	91	93	- 2
Keystone Center	119	139	-20
Atkins Center	208	225	-17
Norway Center	321	331	-10
Middle School	212	208	+4
High School	525	546	-21
Headcount Total	1476	1542	-66

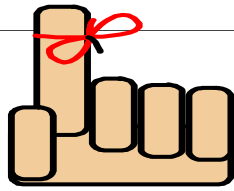
Other calculations in Budget Enrollment FTE (full-time equivalency):

Home School	9.9	6.8	+3.1
Vital/Career Connections	4.0	7.0	-3.0
Open Enroll In	77.8	78.6	-0.8
Tuition Out	5.0	5.0	0.0
Open Enroll Out	118.8	95.0	+23.8
Alternative Education	0.0	0.0	0.0
Budget Enrollment FTE	1539.7	1590.8	-51.1

Our headcount enrollment decreased by 66 students compared to a decrease of 16 students from a year ago. The headcount enrollment reached a peak at 1667 students during the 2000-01 school year. Since that time, Benton Community has experienced significant decline in the overall headcount enrollment. State funding for school districts is determined based on the budget enrollment multiplied by the state district cost per pupil, which is currently \$5948 for this fiscal year. The legislature has approved a 2% allowable growth in state aid for fiscal year 2013.

There are several factors that impact the enrollment for school districts. One of the key indicators is the number of students graduating in a given year compared to the number of incoming kindergartners. This year's senior class has 147 students and our current kindergarten class has 96 students. Based on the current headcount enrollment and grade level distribution of students at Benton Community, it appears the district will continue to see enrollment decline for at least the next five years.





DAYS TO REMEMBER

No School Days =

- November 23- (Staff Comp Day)
- November 24, 25, (Thanksgiving Holiday)
- December 23 - January 2 (Winter Break)
- (Classes will resume Tuesday, January 3)
- January 16 - Holiday

1:00 Early Dismiss Days =

- November 2 (K-6 P/T Conf. 3-8pm) (Prof Dev)
- November 16 (PK-12 Prof Dev)
- December 7(7-12 P/T Conf) (PK-12 Prof Dev)
- December 22 (Beginning of Winter Break)
- January 11 (End of Term 2)
- January 18 - (K-12 Prof. Dev.)

Enrollment Study Committee Appointed by Board of Education

The Benton Community School Board has appointed an enrollment and elementary sectioning study committee. This committee consists of teachers, administrators, PTO/PTA representatives, and patrons from the school district. This committee is charged with reviewing enrollment data and elementary sectioning in the district, review possible alternatives in sectioning based on enrollment decline, and provide the Board with a recommendation at the December board meeting. In the past 10 years, the Benton CSD headcount enrollment has decreased by 175 students. This is an important study in determining if the delivery system needs to be adjusted to reflect the enrollment decline that has not only taken place, but continues to be an area of concern for the district. The committee will have their first meeting on Thursday, October 27th.

☒☒☒Greetings Bobcat Nation

My name is Ben Patterson, and I am the new Art instructor/ Art Club sponsor, at Benton Community High School. A little bit about myself; I am originally from Tama, IA, and attended South Tama County School District. I then enrolled at the University of Northern Iowa, where I graduated with a Bachelor's Degree in Art Education.

I accepted my first teaching job at West Delaware Schools in Manchester, where I taught for six years until Spring 2010. This past year, I taught at Webster City Schools in Webster City, IA. And that brings me up to the present. My family, wife, Chelle, who is a dental assistant in Cedar Rapids, and daughter, Violet, live in Keystone.

Over the past several years, I have taught a wide variety of classes and media including; Foundations of Art, Ceramics I and II, Drawing I and II, Printmaking, Graphic Design, Mixed Media and Photography. I am looking forward to bringing some of my past ideas and experiences to a traditionally solid art program.

In regards to my classes, thus far, I've incorporated both digital and traditional (35mm) photography techniques and processes into my Photography class. I've also tried to incorporate more ceramic work, especially as it relates to the potter's wheel, into my 3-D Art class. As for the Art Club, we have created Homecoming buttons, discussed ideas for a variety of open studio projects, and co-hosted the Halloween Bash with FCCLA.

I plan to continue to explore new ideas, techniques and technologies and find ways to incorporate them into my classes. I look forward to the remainder of the year, as well as the challenges and opportunities that await me here at Benton Community.

Ben Patterson



PRESENTING
FALL MUSICAL

HOLLY DOLLY

The fall musical *Hello, Dolly!* is coming to the Benton Community High School stage on Thursday, Friday, and Saturday, November 3, 4, + 5 at 7:00 P.M. Performances will be at the high school auditorium in Van Horne.

Make reservations by calling the high school office (319-228-8701, ext. 357). Ticket prices are \$6.00 for adults, and \$5 for students and senior citizens.

Hello, Dolly! takes us back to a day when men and women knew their roles and still struggled to figure each other out. Dolly Levi, a matchmaker who meddles with love, ends up finding a match for herself, if she can convince the grumpy Horace Vandergelder that he needs her. Dolly's invincible spirit takes her on some twists and turns, but no one can resist her charm and wit. For an evening of fun and memorable songs, come see Benton Theatre's production of *Hello, Dolly!*

FFA Fruit Sales are Here Again

Benton Community FFA Students are currently in the midst of their annual holiday fruit sales campaign. Premium-quality oranges, apples, pears, clementines, grapefruit, and pineapple are available again this year. Over the years, the FFA has developed a reputation in the community for selling high-quality fruit at reasonable prices.

In addition to fruit, FFA is also selling the ever-popular beef sticks, along with several other varieties of Wisconsin cheese and sausage, cheese spreads, and nuts. This year, we are trialing a new one pound package of beef sticks in addition to the traditional beef sticks. The new beef sticks are made here in Iowa and have a completely different flavor.

Eleven different mixed fruit boxes are available, as are individual boxes of California Sunkist Oranges, grapefruit, pears, clementines, and apples. Apple varieties include Red Delicious, Golden Delicious, Granny Smith, and Braeburn. All mixed boxes and many of the cheese and sausage products are packed in gift boxes that are suitable for holiday gift giving without any additional wrapping.

Proceeds from this fund-raiser are used to fund the many worthwhile leadership and community service projects in which FFA participates each year.

Orders will be taken through Thursday, November 17th. While the FFA members are doing their best to canvass the community, they are not always able to reach everyone who would like to purchase fruit. If you would like to place an order and are not contacted by a student, feel free to contact the school at (319) 228-8701 and leave a message with one of our wonderful secretaries and FFA Advisor Krystal Wright will return your phone call. You can also email at kwright@benton.k12.ia.us. Thank you in advance for your support!



BOBCAT VOICE LINK ANNOUNCEMENTS (515) 830-2164

Cell Phone callers use: 515-830-2164

Long Distance callers use: 515-830-2164

Local Callers use: 830-2164 (no area code needed)



VETERAN'S DAY PROGRAM

Friday, November 11th

9:30 A.M.

Middle/High School Gymnasium



FOOD SERVICE POLICY REMINDERS



There have been some policy changes in regards to food service money matters. State regulations have changed with the times to update our ticket replacement procedure for free/reduced students at the MS/HS. In accordance with the new regulation, if a free/reduced student needs a ticket replacement the food service department will replace the ticket twice, free of charge. After the 2nd replacement, free/reduced students will pay the \$5.00 replacement fee. It is the expectation that ALL STUDENTS at the MS/HS will use their ticket when purchasing both breakfast and lunch. It allows us to get all students through the line quickly with minimal room for error. Students will be expected to replace lost/stolen/destroyed tickets.

Please remember that the food service system is a pay ahead system. The expectation is that money will be kept in the account at all times. Elementary students receive low balance notices twice a week and MS/HS students may take a notice at any time. Once an account goes below -\$10.00, the student will no longer be allowed to participate until the matter is cleared. We would also like to take this opportunity to remind parents of our returned check policy. If a check is returned for non-payment, the check must be paid in full (including any bank fees), in CASH immediately. If the matter is not cleared in a timely fashion, students will not be allowed to participate until the matter is taken care of. If there is a problem, payment arrangements can always be made through the food service department.

Any questions or concerns with these policy procedures, please contact our office at 228-8701 x119.

October 25, 2011

Dear Bobcat Athletics Supporter,

With the arrival of the new school year, it is that time again to ask for your support for the Benton Bobcat Booster Club. The Bobcat Booster Club's mission is to promote and support the athletic teams of Benton Community through both financial and volunteer efforts.

Without the support of families like yours, our student athletes must rely on school budgets for equipment, uniforms, and other miscellaneous purchases needed to keep our programs in a class above the rest. Given the budget challenges our district faces, the Benton Bobcat Booster club helps to supplement those funds which may be affected.

Our goal this year for family membership is \$4,000 which is approximately a 25% increase over last year's contributions. It is an aggressive goal, but with your assistance, we can continue to help instill in our student athletes those values we hold dear; values such as: commitment, character, team work, priorities, responsibility, accountability and hard work. All characteristics which lead to success both on and off the playing field.

Please consider donating at one of the recognized levels. If you can not make that step we understand, and would appreciate any help that you can give.

We thank you in advance for your commitment to Benton Athletics, and hope that you will provide your support for the 2011 – 2012 school year.

**Byran Kimm
President
Benton Bobcat Booster Club**

**Justin Kithcart
Membership Committee Chair
Benton Bobcat Booster Club**

BENTON BOOSTER CLUB FAMILY MEMBERSHIP DRIVE

Membership Levels (check one):

_____ \$200 Diamond Club Membership
Includes Season Athletic Pass
Benton Booster Club Window Cling

_____ \$100 Blue and Gold Club Membership
Includes 10 punch Athletic Pass
Benton Booster Club Window Cling

_____ \$75 Blue Club Membership
Includes Benton Embroidered Crew Sweatshirt
Please circle size: (adult: S – M – L – XL – XXL)
Benton Booster Club Window Cling

_____ \$50 Gold Club Membership
Includes Benton T-Shirt
Please circle size: (youth: S – M – L) (adult: S – M – L – XL – XXL)
Benton Booster Club Window Cling

_____ \$25 Basic Club Membership
Benton Booster Club Window Cling

MEMBERSHIP WILL COINCIDE WITH THE 2011-2012 SCHOOL YEAR AND PASSES WILL ONLY BE VALID FOR REGULAR SEASON GAMES.

Name: _____

Address: _____

City: _____ St: _____ Zip: _____

Phone: _____ Email: _____

Amount Paid: _____ Date: _____

-----PLEASE MAKE CHECKS PAYABLE TO BENTON BOOSTERS-----

IF JOINING BY MAIL, PLEASE SEND MEMBERSHIP FORM AND REMITTANCE TO:

Justin Kithcart
7101 31st Avenue
Atkins, IA 52206
Phone: 319.350.0667
email: Justin.Kithcart@cardinalhealth.com

Meetings are held the 1st Wednesday of each month during the school year in the BCHS Student Center and you are encouraged to attend.

Top 10 Job Shadow Career Choices for Area High School Students

Nanci Young, Workplace Learning Connection

Close to 1300 high school students in the Grant Wood Education Agency Area 10 will be out taking part in job shadows this fall and winter, including 22 from Benton Community. Workplace Learning Connection coordinates these career experiences with local businesses to provide a quality learning experience for Benton students to better prepare them for the world of work. Here's a breakdown of the top ten career fields requested by this year's students:

#10 is a tie between Athletic Trainer and Radiology Technician with 21 requests each;

#9 Pharmacist request are at 24;

#8 Psychologist requests are at 34;

#7 Physical Therapist requests are at 38;

#6 Careers in Veterinary Sciences are close behind with 55 requests;

#5 The U of I Mini Medical day, geared toward becoming a doctor, garnered 39 requests, but add another 19 requests for specific physician fields and Doctors round out at 58 total;

#4 Nursing is the 4th on the list with 62 requests;

#3 Teachers came in 3rd with 86 total requests, the majority of them for Elementary teaching (47);

#2 The Law Enforcement field includes 79 total requests for the Mini Police Academy and 36 requests for the FBI for a total of 115;

And, the #1 choice in the region: Engineers top the list with 131 total requests, the majority of them for Biomedical Engineering and Mechanical Engineering at 23 requests each. Other engineering job shadow requests include Aerospace, Chemical, Civil, Computer, Electrical, Environmental, Industrial, Manufacturing, Materials, Nuclear and a smattering of misc. engineering careers.

Engineering, Human & Family Services, Health Science, and Agriscience are the top four career pathways.

Students are encouraged to explore their future through work-based learning activities such as job shadows and internships. There will be a second opportunity for students to apply for WLC job shadows. The deadline for 2nd round Job Shadow applications is December 16, 2011. Area schools' Guidance departments will receive information about that opportunity shortly after Thanksgiving break. Area High School juniors and seniors can apply for WLC Winter/Spring 2012 Internships, as well. Applications are due 11/18/11 to WLC. WLC is connecting today's students to tomorrow's careers! Students can speak with Ms. Nesbitt at the high school's Guidance office or log on to www.workplace-learning.org.

Hello, my name is Clay Anderson and I am the new Success Coach at Benton MS/HS and the head football coach.

I started my teaching/coaching career in Northfield, Minnesota, which is also the town I grew up in. I moved to Le Center, Minnesota where I was the school's Athletic Director and head football coach and have had stints doing the same jobs in Norwood Young America and most recently in Albert Lea, Minnesota.

As Success coach at Benton, I check attendance, student's grades, work with AP students, and on-line learning. I also serve on a couple of committees to help improve student learning and I am available to any student who may have an issue, need, etc.

The football team just finished their season and after starting 1-5, we rolled off three straight wins to finish the season 4-5. Great Job!

My wife Brenda and I are very excited to be a part of Benton Community and have been impressed at how the people here have made us feel welcome.

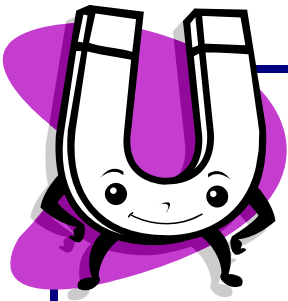
We really believe this is a special place!
If anyone has a concern or need that I can help with, please feel free to call me during school hours at 319-228-8701 ext. 363!
Go Bobcats!



JOB OPENING Benton Community Schools

**Bus Stop Supervisor
(Blairstown)**

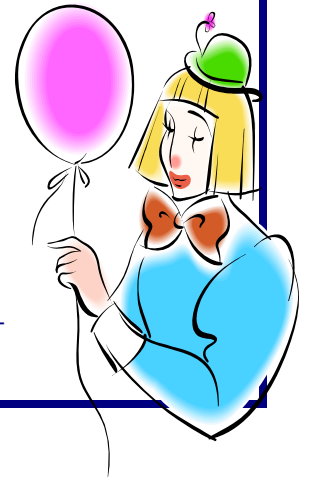
**If interested, please contact
Tim Lyons,
Director of Transportation
at
319/228-8426**



Benton Preschools hold Family Fun Night

As one of the requirements of the Iowa Quality Preschool Program Grants, each year the Benton Community Preschool programs at each Elementary Center hold a Family Fun Night. This year, Rachel Herman at the Norway Center created a Night with Science. Preschool children and their family members participated in hands on experiments in the areas of air, friction, magnets, light, gravity, weight, speed, water, and wind. Following the experiments, families were treated to a meal. The Atkins preschool teachers, Lisa Shutters, Jennifer Freese and Carolyn Spading treated their families to a Night at the Circus. Participants made clown hats, circus counting books, had their faces painted and were treated to popcorn and cotton candy. They were also delighted by a clown, Carrie Ann Sahu, Special Education Teacher at the High School, who made balloon animals. Jodie Wood at the Van Horne Center will be holding their Preschool Family Fun Night in the spring with the emphasis on outdoor games.

Children are naturally curious, and the more opportunities provided to them to enrich their learning, the better. It is important to celebrate, promote and encourage curiosity to extend their learning. The Preschool Family Fun Nights are held to support parents in connecting with their child and relate their discovery to prior experience or knowledge. Parents are encouraged to ask open-ended questions related to what the child is doing, help the child(ren) find answers to questions and nurture their learning. Curiosity is a necessary ingredient in learning. The preschool teachers encourage parents to “catch it”!



Benton Board Approves Infrastructure Project:

At the October regular meeting of the Benton Board of Education, the board approved moving forward with a significant infrastructure project designed around activity program facility upgrades. There will be three primary areas of focus – stadium and site improvements, exterior buildings, and interior work. While we are in the early stages of design work, here is a tentative overview of the project scope. The field and site improvements will include a new 8 lane track and field turf that will support several programs – track, football, soccer, marching band, etc. It will also include new bleachers, new lighting, electrical, and sound upgrades. The exterior building work will include a new concession and restroom facility, a west and east entry facility that will include storage, and an additional storage facility on the north end of the stadium for track and maintenance equipment. The third phase of the project includes upgrades to the interior of the MS/HS. This includes new seating in the auditorium and gymnasium and a remodel of the vocal and band area to create additional storage and easier access to the performance stage. There will also be other alternates included in the project scope as well. The initial cost opinion shared with the Board by Shive-Hattery, Inc. was \$4.96 million. This project would be financed through a sales tax revenue bond similar to the bonding process used for the Atkins Center project. This project will commence in the spring of 2012 with targeted completion for the 2012-13 school year.

BC CONNECTION



Section 504 Notice of Nondiscrimination

Students, parents, employees and others doing business with or performing services for the Benton Community School District are hereby notified that this school district does not discriminate on the basis of age, race, color, creed, religion, national origin, sex, marital status, sexual orientation, gender identity, or disability in admission or access to, or treatment in, its programs and activities. Any person having inquiries concerning the school district's compliance with the regulations implementing Title VI, Title VII, Title IX, the Americans with Disabilities Act (ADA), Section 504, or Iowa Code Section 280.3 is directed to contact Jo Prusha, 600 1st Street, P.O. Box 70, Van Horne, Iowa 52346; or call 319/228-8701, ext. 351, who has been designated by the school district to coordinate the school district's efforts to comply with the regulations implementing Title VI, Title VII, Title IX, the ADA, Section 504 and Iowa Code Section 280.3.

The Benton Connection -
A publication of the Benton Community School District - October, 2011. Serving the communities of Atkins, Blairstown, Elberon, Keystone, Newhall, Norway, Van Horne, and Watkins. Superintendent Gary Zittergruen. Editor Peggy Nelson.

The Benton Board of Education:

Jack Barnes, Roy Becker, Bill Boies, Wayne Reinhardt, Patrick Stepanek, Brian Strellner, and Daniel Voss.

The Board of Education meetings are held on the third Wednesday of each month. District residents are invited to attend. The Benton Community School District does not intentionally discriminate on the basis of sex, age, race, color, religion, national origin, creed, marital status, gender identity, sexual orientation, or disability in their employment practices, or as otherwise prohibited by statute or regulation.

**Benton Community Schools
304 1st Street
P.O. Box 70
Van Horne, Iowa 52346-0070**

Return Service Requested

**NON-PROFIT ORG.
U.S. POSTAGE
PAID
Van Horne, Iowa
Permit No. 13**